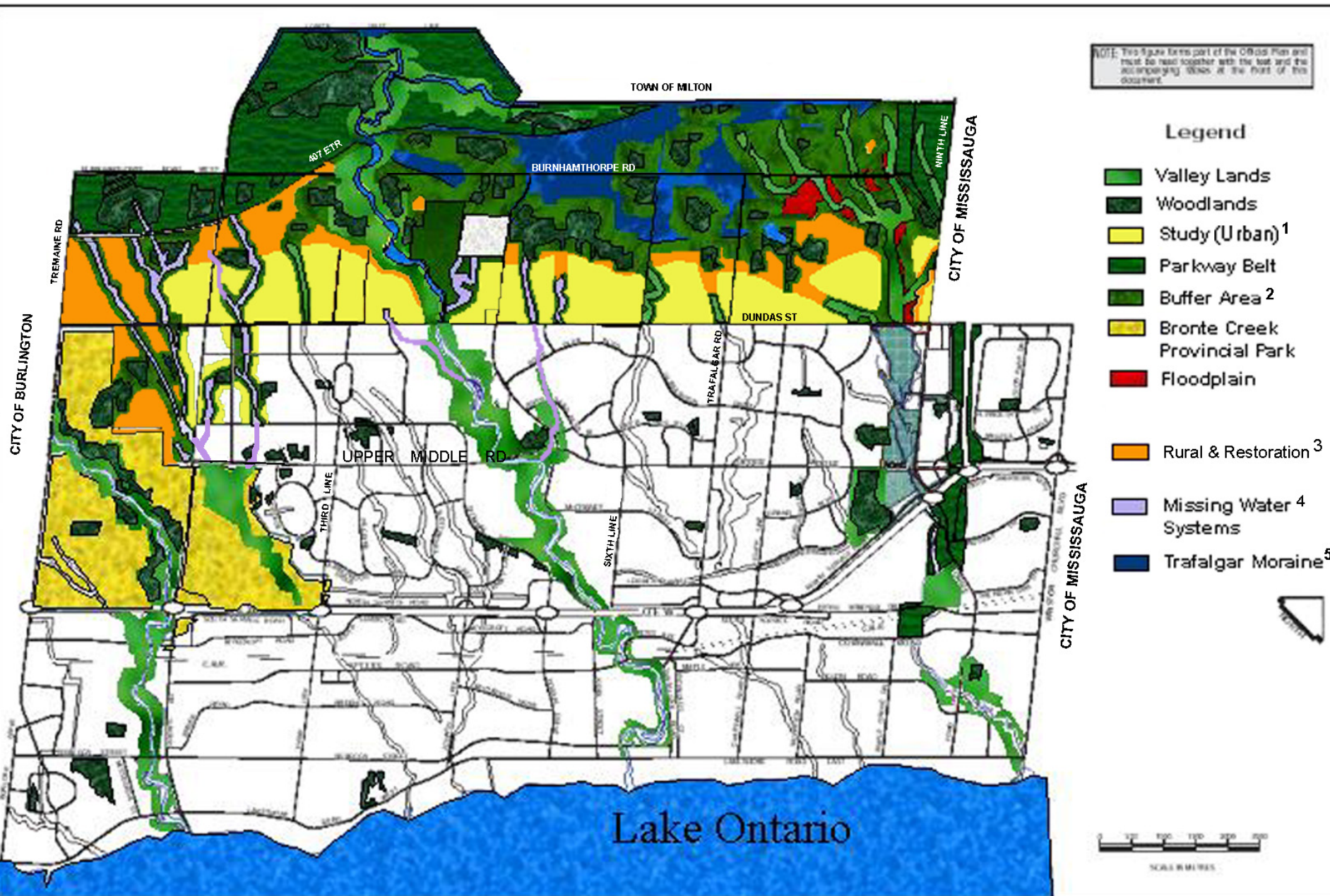


NOTE: This figure forms part of the OGIS Plan and must be read together with the text and the accompanying maps at the front of this document.



Legend

- Valley Lands
- Woodlands
- Study (Urban)¹
- Parkway Belt
- Buffer Area²
- Bronte Creek Provincial Park
- Floodplain
- Rural & Restoration³
- Missing Water⁴ Systems
- Trafalgar Moraine⁵

1 Urban envelope is contained in accordance with Smart Growth principles. Urban lands include residential and commercial. Industrial space available should be calculated before adding more.

2 Buffers on straight streams should be 200 m to accommodate recreational/wildlife use. Buffers on outer meander belts should be 300 m to accommodate future erosion of Queenston shale. Woodlot buffers should be 100 m adjacent to urban areas to protect interior forest moisture and habitat for songbirds.

3 Rural lands include agricultural uses. Greenlands system should include some restoration of forest habitat between remaining woodlots. Headwater and groundwater protection is encompassed in this designation. Bronte Creek Provincial Park is connected to Sixteen Mile Creek and the Trafalgar Moraine via this designation to further Carolinian species bioregional connectivity northward.

4 Missing and historic watercourses. Many smaller tributaries may be buried or rerouted. Further watershed studies are needed.

5 The Trafalgar Moraine feeds many streams into Lake Ontario and is best represented in the Trafalgar area. As such, it should be protected in this area of Oakville.