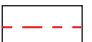




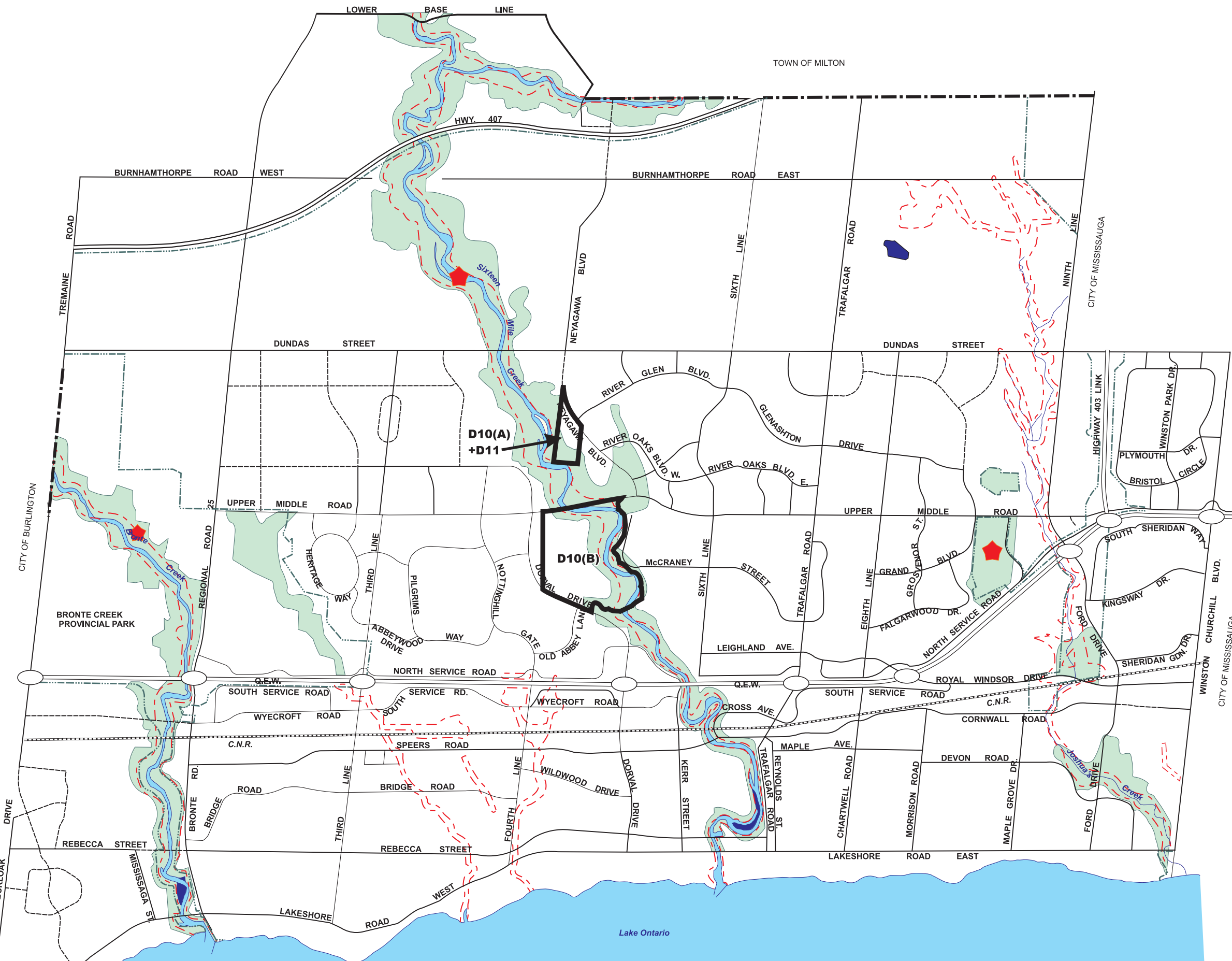


NOTE: This figure forms part of the Official Plan and must be read together with the text and the accompanying tables at the front of this document.

### Legend

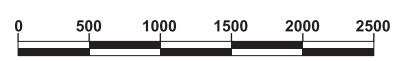
-  Floodplain
-  Environmentally Sensitive Area
-  Wetlands
-  Areas of Natural and Scientific Interest (ANSI's)
-  Parkway Belt



### Natural Features

**FIGURE F2**  
**Town of Oakville**  
**Official Plan**

Planning Services Department  
 Corporate Drafting & Design Office  
 February 2002



# OFFICIAL PLAN AMENDMENT No. 198